



**KIP Cloud Printing
of Markups From Apple iPad
Operator Guide**

KIP Cloud Printing from iPad



Contents

- KIP Cloud Printing of Markup Documents using Apple iPad and iAnnotate Application 1
- Applications for Annotation 1
- KIP Cloud printing to KIP Systems 2
- Demonstrate Cloud Printing to KIP Printers 4
- Demonstrate Cloud Printing to KIP Mailbox 7
- KIP Printer Setup and iPad App Configuration 8
- Appendix 11

KIP Cloud Printing from iPad



KIP Cloud Printing of Markup Documents using Apple iPad and iAnnotate Application

AEC field personnel using an Apple iPad can markup/annotate a PDF document with simple highlighter, red-line and stamp features. The resulting markup created by the iPad (as a PDF) can be sent to a KIP printer for direct printing or future viewing and color printing when sent to a Mailbox Queue.



Applications for Annotation

Markup – Markups are performed using highlighters, color or black pens, and text annotation to suggest changes to an AEC or graphic document. Performed manually on hard copy documents; the Ipad App allows for doing this electronically with a variety of colors, text and drawing tools.

Redline – Redlining is performed using red or color markers to electronically define areas of a document that require attention.

Stamping – Standard and Custom stamping can be performed using the Apple App.

Standard – graphical stamps include Draft, Confidential, Accepted, Rejected and Sign Here.



Custom – stamps as JPG's and TIF files imported by iTunes and synced to the iPad. Customer stamps include: photographs, company logos, or a signature.



This information is solely for use of KIP Personnel and KIP Authorized Dealers. No part of this publication may be copied, reproduced or distributed in any form without express written permission from KIP. © 2011 KIP.

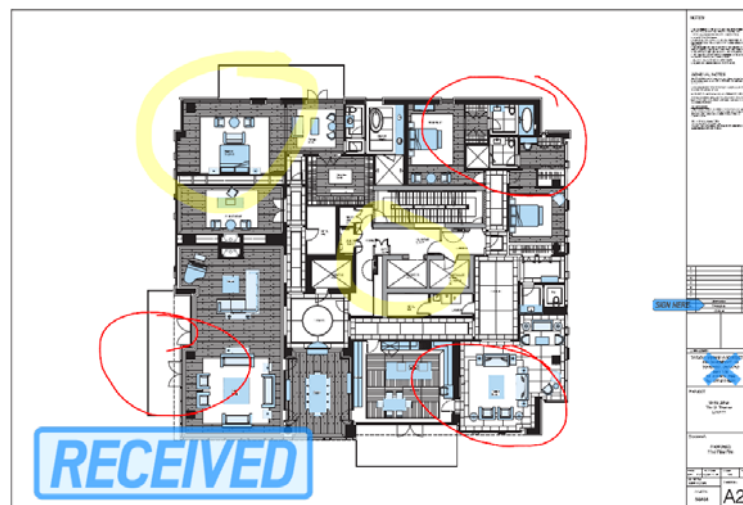
KIP Cloud Printing from iPad



KIP Cloud printing to KIP Systems

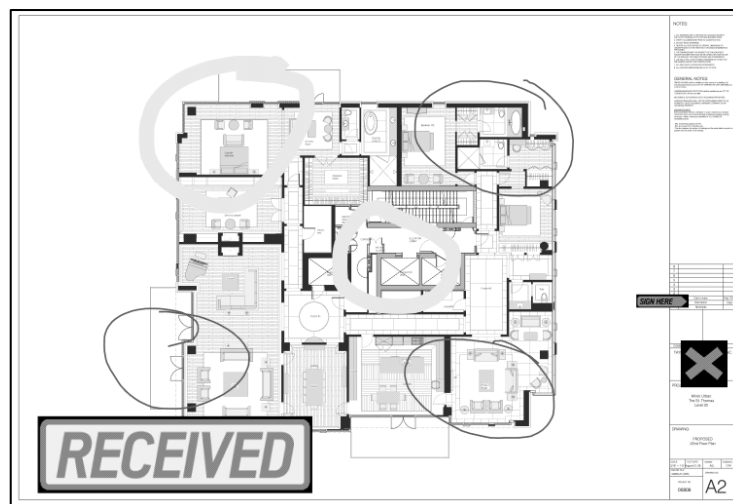
Printing to the KIP Color 80

The annotated documents can be printed directly to the KIP Color 80. The colored stamps, highlighting and redline print in full color. When directed to a KIP Mailbox, the documents can be included with others documents to create collated sets.



Printing to KIP Monochrome

When printing the color PDF to a KIP monochrome device, the color data will be converted to grayscale. When directed to a KIP Mailbox, the documents can be included with others to create collated sets.



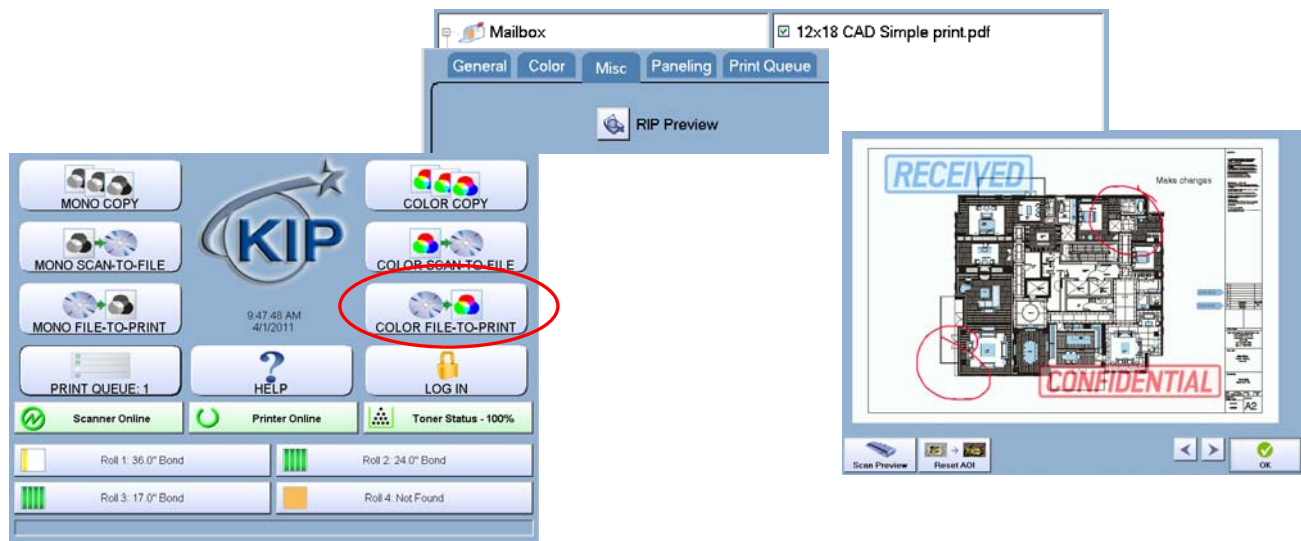
This information is solely for use of KIP Personnel and KIP Authorized Dealers. No part of this publication may be copied, reproduced or distributed in any form without express written permission from KIP. © 2011 KIP.

KIP Cloud Printing from iPad



Printing to Mailbox for use with Inkjet

When directed to a KIP Mailbox, the documents can be previewed and printed to an Inkjet printer using KIP Color Advance.



Equipment, software and applications required:

- KIP Printer version 7.2.280 or higher with connection to email server (internet or intranet)
- KIP Web App: Cloud Printing version 1.0 or higher, release date 1-20-2011
- Valid email address and credentials for each KIP Printer. This can come from a corporate account or third party email such as Yahoo, Gmail, etc.
- Apple iPad with version 4.3.1 or higher with Internet connectivity (wi-fi or 3G).
- Corporate or third party email account for use by Apple iPad.
- Purchase the product: **"iAnnotate PDF"** from Apple App store for \$9.99 or download the free Apple App: **"neu.Annotate.PDF"**. iAnnotate PDF has a wider variety of tools and stamps than the product called neu.Annotate.PDF.
- Example PDF document that will be used for Markup. For demo purposes use an 11 x 17 PDF.

KIP Cloud Printing from iPad




Demonstrate Cloud Printing to KIP Printers

Workstation PC

Email a PDF document to the email account accessible by the iPad. This will allow you to access the PDF from the Ipad.

Apple IPAD

1. Prior to opening a PDF in iAnnotate, it is best to configure the default “email body” in iAnnotate to include the Copy, Media, and Zoom settings. This will make it much easier when sending the email to adjust the Copy Count, and Zoom settings. On the right side of the iAnnotate application, select the  button for “Settings”. Then choose “Sharing”, and “Default Email Body”. Enter in the default email body that the KIP Printer will use for copy count, media selection, and enlargement/reduction settings.

Eg: Copy=1 Media=Bond Zoom=100



2. From the main UI on the iPad, access the Email application. Find the email with the PDF document. Alternatively, copy the PDF to the iPad using the File Sharing function of iTunes.

3. In the email attachment, press and hold your finger on the PDF attachment, this will allow you to open the PDF directly in the iAnnotate application.

KIP Cloud Printing from iPad

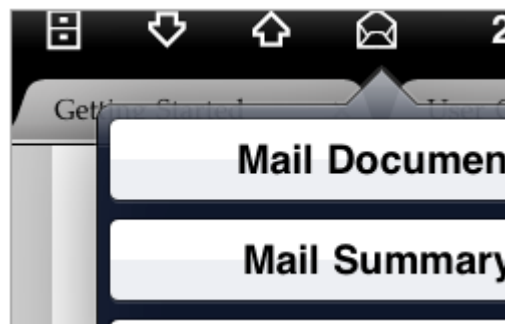


4. Use the Tool bar to apply various Stamp, Markup, and Highlighter features on top of the PDF file.



When complete, select the button to email the document to the KIP Printer.

Choose the file format to email: "Annotated". It may take 30s to process and attach the email.



KIP Cloud Printing from iPad



5. Enter the email address that the KIP Printer is monitoring and edit the Copy= , Media=, or Zoom= as necessary. Choose SEND to send the email. Note that the internet connection speed will affect how quickly the email is sent.

On KIP Printer

The Cloud Printing KIP email plug-in will check for new emails at the set interval. Depending on the setting configured in PrintNET at the KIP Printer, the KIP Monochrome system can either print the image directly or hold it in a Mailbox Queue. When the KIP printer is configured for "Create Job Ticket", the PDF will appear in the Print Queue and print.

| Requester: | Distribution: | Status | Type | Total: |
|---|---------------|------------|------|--------|
| "Tony Janisse" <TJanisse@kipamerica.co | Test files | Processing | | 1/1 |

KIP Cloud Printing from iPad



Demonstrate Cloud Printing to KIP Mailbox

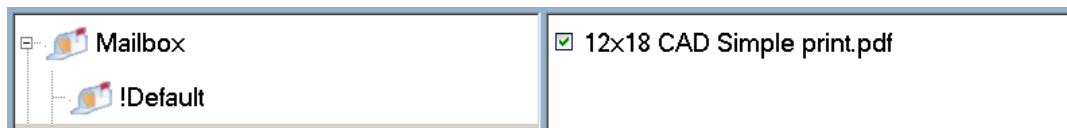
When the KIP printer is configured for "Move to IPS Mailbox (hold)", it will appear in a Mailbox automatically created based on the name of the email sender.

1. Using KIP Color Advance (Optional), the PDF can be previewed and printed as necessary in color to the KIP Color 80 or in black/white to a KIP monochrome printer.
2. From the main Touchscreen UI, select the Color File-to-Print feature.

Choose the "FILE" button to select from the available Mailboxes.

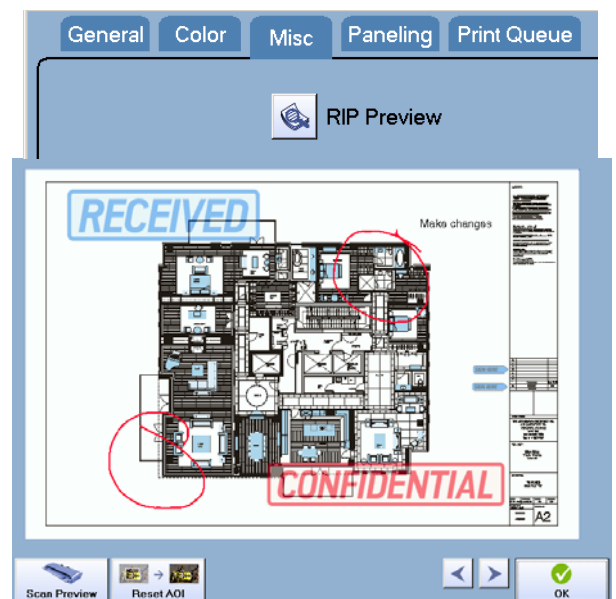


Choose the Mailbox that contains the name of the sender, and select the PDF created by iAnnotate.



Choose OK to exit the file selection screen.

3. To preview the image choose the "MISC" tab and "RIP Preview" to view the image. Choose OK to exit the Preview screen.
4. Choose the GENERAL tab to make the necessary changes to the enlargement/reduction and copy count settings, select "PRINT" to send the image to the printer.



KIP Cloud Printing from iPad



KIP Printer Setup and iPad App Configuration

1. KIP Monochrome Setup

Monochrome systems currently running the 7.2.280-02 or higher software is already configured with the correct PrintNet E-mail Plug-in.

KIP Color Setup

It is necessary to update the KIP Color 80 first with the Current Ghost (restore) DVD dkcs-XPe-Sp3-7.2.275-01 to bring the system up to date. An additional patch will then be necessary to apply the PrintNet E-mail Plug-in to make the KIP Web App: Cloud Printing function. Please Contact your Dealer to order these updates.

- It is necessary to perform a one-time setup on the KIP Printer. To configure the KIP Web App for printing use KIP PrintNET to enter the necessary email address setup and configure for "Move to IPS Mailbox" (Mailbox Queue) or "Create Job Ticket" (Direct Print). This is the email address that will be used to receive emails from the iPad. These emails will contain the PDF that will be printed or saved in a Mailbox Queue.

The screenshot shows the 'Email Settings' window with several tabs: SMTP, Job Ticket Email, Printer Status Message, Monthly Meter Report, Service Interval, and Email Plug-in. The 'Email Plug-in' tab is selected. Below the tabs is the 'Email Plug-in Service Application Settings' section, which contains 'Email Account Settings'. The fields are as follows:

- Email Address: kip.novi7700@gmail.com
- Account Type: POP3 (selected), IMAP
- Use encrypted connection (SSL):
- Server Address: pop.gmail.com
- Server Port #: 995
- IMAP Inbox Folder: (empty)
- Username: kip.novi7700
- Password: (empty)
- Confirm Password: (empty)
- Check for new Email Interval: 1 Minute(s)

A red note at the bottom of the form reads: "Please Leave the Password fields empty if you wish to keep the existing password".

KIP Cloud Printing from iPad



| Job Ticket Custom Keywords | |
|----------------------------|-------|
| File | File |
| Copy | Copy |
| Media | Media |
| Zoom | Zoom |

Default Delivery Mode Move to IPS Mailboxes (Hold) Create Job Ticket

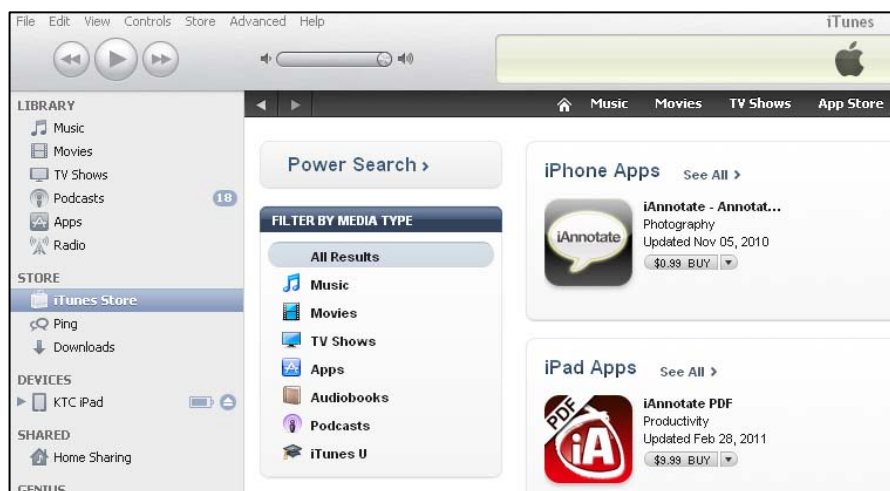
3. On KIP monochrome printers, it may be necessary to disable the No Transparency feature in Monochrome PDF Processing. This is performed via PrintNET in the Basic Configuration section.



Apple iPad Setup for iAnnotate:

1. Using Apple iTunes, visit the iTunes store, search for the iAnnotate PDF application.

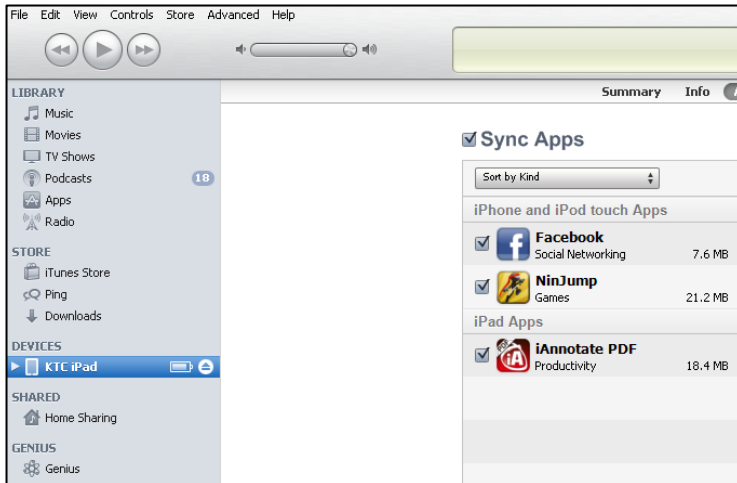
Information and User Guide are also available on their website: <http://www.ajidev.com/iannotate/>



KIP Cloud Printing from iPad



2. Using Apple iTunes, purchase and download the iAnnotate PDF application.



KIP Cloud Printing from iPad



Appendix

Cloud Print by device

It is important to know that each device may or may not have limitations on its use in conjunction with the KIP America Cloud printing function of KIP Printers. This document is designed to point out the more common devices being used. Limitations and ease of use will vary from one device to the next.

lpad/lphone

lpad's and lphones have a limitation in that they do not allow for the opening or saving of a native .pdf file. In order to Cloud Print .pdf from the Apple lpad it is necessary to have an application that will allow the opening of .pdf files and then be able to attach them to a e-mail. There are both paid for and free apps that will allow this. This document mentions two:



Neu.annotate - Read and annotate PDF documents. Annotate with drawings, highlighting text, text notes, photos and stamps. Annotations are compatible with Apple Preview and Adobe Acrobat!



This App is available for free.

<http://www.neupen.com/>

<http://itunes.apple.com/us/app/neu-annotate-pdf/id407107609?mt=8>

iannotate – iAnnotate is a PDF reader and a powerful annotation tool. You can open documents from email, fill out forms, sign and send out contracts, enter notes for edits, sketch diagrams, copy text, and add highlights or underline with the drag of a finger! Includes the ability to use custom stamps such as company logo or signatures.

This App is available for \$9.99 (US).

<http://www.ajidev.com/iannotate/>

<http://itunes.apple.com/app/iannotate-pdf/id363998953?mt=8>

KIP Cloud Printing from iPad



Windows Mobile 7 phones

Windows Mobile 7 has a limitation in that it does not allow for the opening or saving of a native .pdf files. In order to Cloud Print from the Windows Mobile 7 phone it will be necessary to receive a file in either .tiff or .jpeg format that can then be saved to your saved pictures folder. From here .tiff and .jpeg files can be attached to an e-mail that can be sent to the KIP Printer. Future versions of Windows 7 will include the ability to attach files from an internet based Sky Drive.



Windows Mobile 6 phones

Windows Mobile 6 phones have a file structure that allows the opening and saving of .pdf files. In order to Cloud Print from the Windows Mobile 6 phone it is necessary to save the file to be printed to a desired location. Once the file has been saved it can be opened or attached to an e-mail and sent to the KIP printer.

